

Interlink Alloy Systems Ltd

The Podium Range

With the new Working at Height Regulations (WAHR) now in force, Interlink offers a range of Podium Steps to suit most applications where, in the past, folding steps were used. Podium Steps are “a safe alternative to builders steps”. Interlink are the original inventors and manufacturers.



MK1

Up to 1.17m Platform Height
- 3.2m Working Height



MKII

Up to 1.5m Platform Height
- 3.5m Working Height



MKIII

Up to 1.9m Platform Height
- 3.9m Working Height

The three basic types are shown here, but many variations and specials have been made to suit customers requirements including cantilevers and bridging units. Please contact us if you have any special requirements.

INTERLINK ALLOY SYSTEMS LIMITED

Southend Farm, Southend Lane
Waltham Abbey, Essex EN9 3SE

TEL: 01992 716509/716579 FAX: 01992 652500
sales@interlinkalloy.co.uk www.interlinkalloy.co.uk

MKI Podium features

Maximum Platform Height 1.17 M - Reach Height 3.2 M
The deck is 600 mm wide



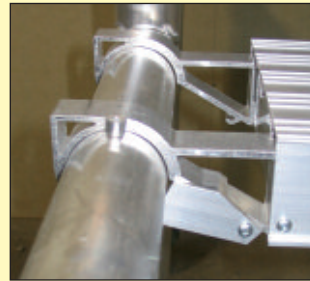
Folds flat for ease of transportation and the whole unit weighs less than 22 Kg.



The framework "snaps" open to give a rigid framework at the back.



All Aluminium steps and platform for strength and weight saving.



Hook locking devices on each step.



To work at the highest level fit platform on top rung and serrated climbing rung as shown.



Telescopic side frames extend and lock into position to provide a side handrail when working at the upper level.



Horizontal braces complete the guard rail around the top working area.



With the platform on the fourth rung the platform height is 1.17m, giving a reach height of 3.2m.

Overall Height:- 1990 mm Overall Width:- 680mm Overall Length:- 1250 mm Weight:- 22 Kg

MKII Podium features

Maximum Platform Height 1.5 M - Reach Height 3.5 M

The deck is 850 mm wide



The MKII opens up and the back frame clicks into place the same way as the MKI.



The steps and diagonal braces are fitted before the platform is placed in position.



Extending gate shown in its "Parked" position



With the platform in place the gate can be unclipped from its parking position and locked on to the vertical of the frame.



With the gate and castor's locked the Podium is ready for use.



Swivel locking castor.

Overall Height:- 2.55 M Overall Width:- 0.9 m Overall Length:- 1.25 M Weight:- 29 Kg

MKIII Podium features

Maximum Platform Height 1.9 M - Reach Height 3.9 M
The deck is 850 mm wide



After opening the unit, serrated climbing rungs and diagonal braces are fitted.



Steps and platform are positioned.



Outriggers are fitted for extra stability.



When in position climbing rungs are used to get on to top platform.



The gate is released from its parking position and locked on to the frame as MKII



The assembled Podium is ready for use.

Overall Height:- 2.9 M Overall Width:- 0.9 m Overall Length:- 1.3 M Weight:- 46 Kg

Interlink Alloy Systems reserve the right to alter specifications without prior notification.